

# PRIVATE GUEST LODGE

## GADSBY LAKE, ALBERTA

PROJECT #: 2116

### DRAWING LIST

#### ARCHITECTURAL DRAWINGS

##### Stewart Architects Limited

A-01 LOWER FLOOR PLAN  
 A-02 MAIN FLOOR PLAN  
 A-03 SECOND FLOOR PLAN  
 A-04 GARAGE PLANS AND DETAILS  
 A-05 ROOF PLAN  
 A-06 NORTH & WEST ELEVATIONS  
 A-07 SOUTH & EAST ELEVATIONS  
 A-08 BUILDING SECTIONS  
 A-09 BUILDING SECTIONS  
 A-10 WALL SECTIONS  
 A-11 WALL SECTIONS  
 A-12 WALL DETAILS  
 A-13 WALL DETAILS  
 A-14 CLAD DOOR SCHEDULE  
 A-15 CLAD WINDOW SCHEDULE

A-16 INDOOR PARTITIONS  
 A-17 BALCONIES AND RAMPINGS  
 A-18 FIREPLACE DETAILS  
 A-19 CUSTOM STAIR DETAILS  
 A-20 STAIR DETAILS  
 A-21 INTERIOR DOOR SCHEDULE

#### MECHANICAL DRAWINGS

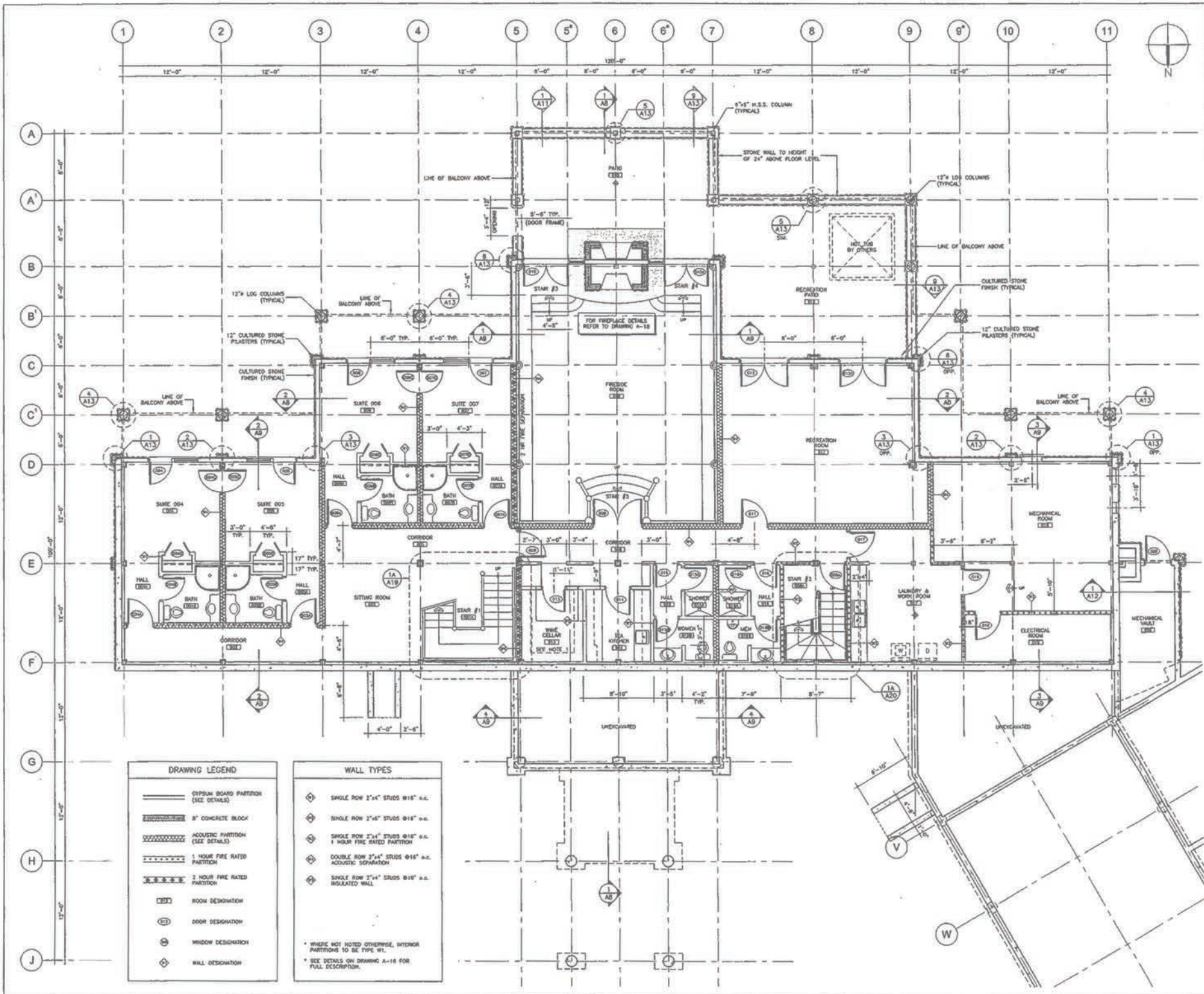
##### Sterling Engineering Inc.

M-01 SITE PLAN  
 M-02 BASEMENT FLOOR PLAN - PLUMBING AND HEATING  
 M-03 MAIN FLOOR PLAN - PLUMBING AND HEATING  
 M-04 SECOND FLOOR PLAN - PLUMBING AND HEATING  
 M-05 BASEMENT FLOOR PLAN - HVAC  
 M-06 MAIN FLOOR PLAN - HVAC  
 M-07 SECOND FLOOR PLAN - HVAC  
 M-08 SCHEDULES AND SCHEDULES

#### ELECTRICAL DRAWINGS

##### Reinbold Engineering Ltd.

E-01 SITE PLAN - ELECTRICAL LAYOUT  
 E-02 BASEMENT FLOOR PLAN - LIGHTING  
 E-03 BASEMENT FLOOR PLAN - POWER & LOW VOLTAGE SYSTEMS  
 E-04 MAIN FLOOR PLAN - LIGHTING  
 E-05 MAIN FLOOR PLAN - POWER & LOW VOLTAGE SYSTEMS  
 E-06 SECOND FLOOR PLAN - LIGHTING  
 E-07 SECOND FLOOR PLAN - POWER & LOW VOLTAGE SYSTEMS  
 E-08 ROOF PLAN - LIGHTNING PROTECTION  
 E-09 ELECTRICAL DETAILS  
 E-10 GARAGE FLOOR PLAN - ELECTRICAL & DETAILS  
 E-11 ELECTRICAL DETAILS  
 E-12 ELECTRICAL DETAILS - GRAPHIC EYE DRAWING AND CONTROLS  
 E-13 ELECTRICAL PANEL SCHEDULES  
 E-14 ELECTRICAL SCHEDULES



This drawing is the property of the Architect. Reproduction is prohibited without his or her written approval. This drawing is not to be used for construction unless it is properly signed and sealed by the Architect. The Contractor shall check and verify all given dimensions and report any discrepancies to the Architect prior to construction. This drawing not to be scaled.



D.C. STEWART ARCHITECT LIMITED  
 PERMIT NO. 120  
 ISSUED PURSUANT TO  
 THE ARCHITECTS ACT, ALBERTA

REVISIONS

NO.	DATE	DESCRIPTION
1	24 JAN 02	ISSUED FOR CONSTRUCTION

- NOTES
- ENTIRE WINE CELLAR CLAD IN 8 MIL POLYETHYLENE SHEET, BEFORE INSTALLATION OF GYPSUM BOARD.
  - FOR COMPLETE STAIR DIMENSIONS AND DETAILS REFER TO DRAWINGS A-19 AND A-20.

**DRAWING LEGEND**

	GYPSUM BOARD PARTITION (SEE DETAILS)
	8" CONCRETE BLOCK
	ACOUSTIC PARTITION (SEE DETAILS)
	1 HOUR FIRE RATED PARTITION
	2 HOUR FIRE RATED PARTITION
	ROOM DESIGNATION
	DOOR DESIGNATION
	WINDOW DESIGNATION
	WALL DESIGNATION

**WALL TYPES**

	SINGLE ROW 2"x4" STUDS @16" o.c.
	SINGLE ROW 2"x6" STUDS @16" o.c.
	SINGLE ROW 2"x4" STUDS @16" o.c. 1 HOUR FIRE RATED PARTITION
	DOUBLE ROW 2"x4" STUDS @16" o.c. ACOUSTIC SEPARATION
	SINGLE ROW 2"x6" STUDS @16" o.c. INSULATED WALL

\* WHERE NOT NOTED OTHERWISE, INTERIOR PARTITIONS TO BE TYPE W1.  
 \* SEE DETAILS ON DRAWING A-16 FOR FULL DESCRIPTION.

**dc**  
 Stewart  
 architect  
 limited

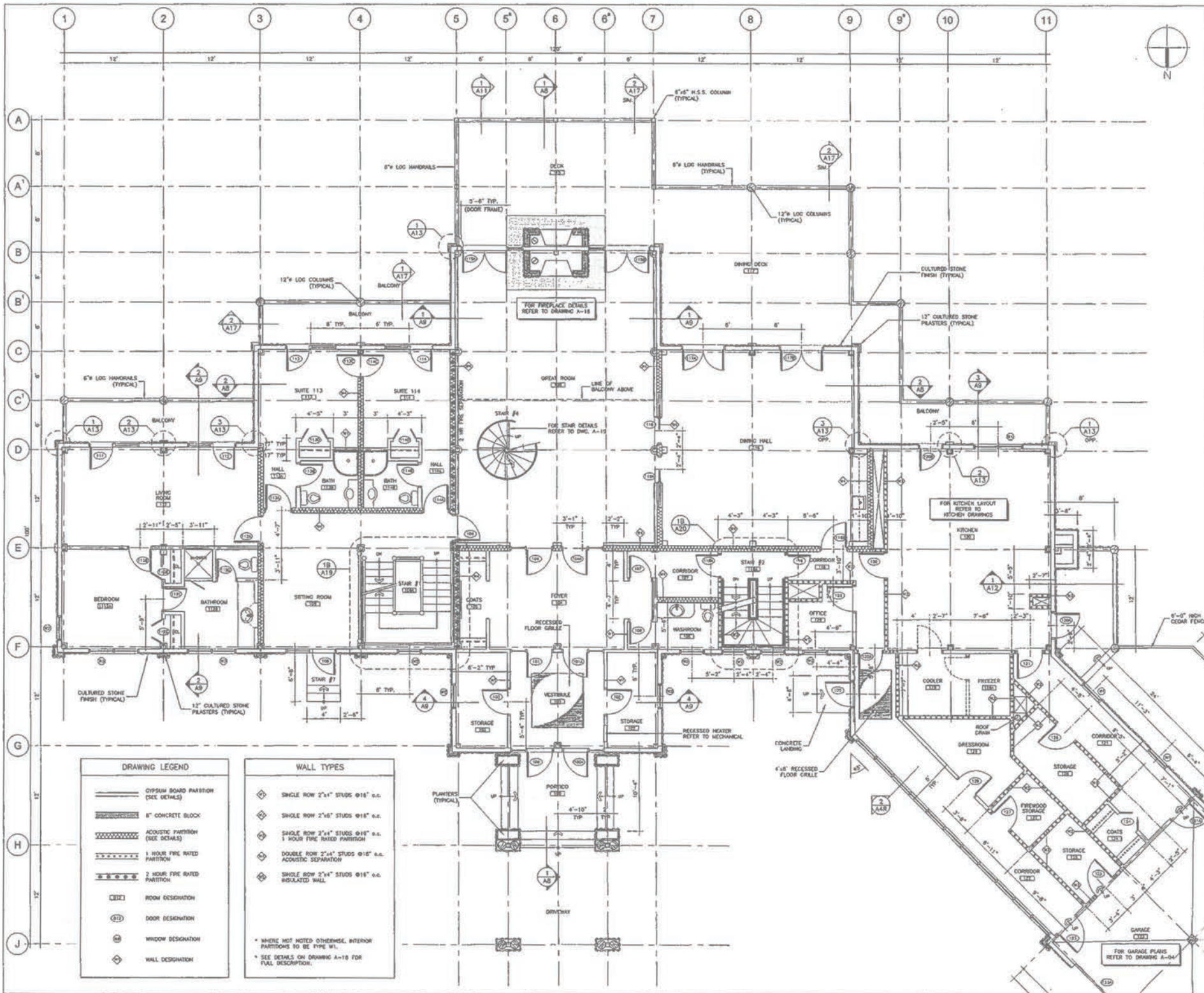
Suite 200, 28-17th Avenue SW Calgary  
 Alberta T2S 0A4 Canada (403) 228-4231

Architecture Planning Interior Design

Project  
**PRIVATE GUEST LODGE  
 GADSBY LAKE  
 ALBERTA**

drawing title  
**LOWER  
 FLOOR PLAN**

scale 3/16" = 1'-0" project no 21116  
 date 21 AUG 01 drawing no A-01  
 drawn EC  
 checked DCS  
 approved



This drawing is the property of the Architect. Reproduction is prohibited without his or her written approval. This drawing is not to be used for construction unless it is properly signed and sealed by the Architect. The Contractor must check and verify all given dimensions and locate any discrepancies to the Architect prior to construction. This drawing not to be copied.



D.C. STEWART ARCHITECT LIMITED  
 PERMIT NO. 120  
 ISSUED PURSUANT TO  
 THE ARCHITECTS ACT

REVISIONS	NO.	DATE	DESCRIPTION
1	22.MAR.02		REVISED FLOOR PLAN

- NOTES
- FOR COMPLETE STAIR DIMENSIONS AND DETAILS REFER TO DRAWINGS A-19 AND A-20.

**dc**  
 steewart  
 architect  
 limited

Suite 200, 211-17th Avenue SW Calgary  
 Alberta T2S 0A4 Canada (403) 228-4231

Architecture Planning Interior Design

project:  
**PRIVATE GUEST LODGE  
 GADSBY LAKE  
 ALBERTA**

drawing title:  
**REVISED MAIN  
 FLOOR PLAN**

scale: 3/16" = 1'-0" project no: 21116  
 date: 22.MAR.02 drawing no: A-02R  
 drawn: EC  
 checked: DCS  
 approved: [Signature]

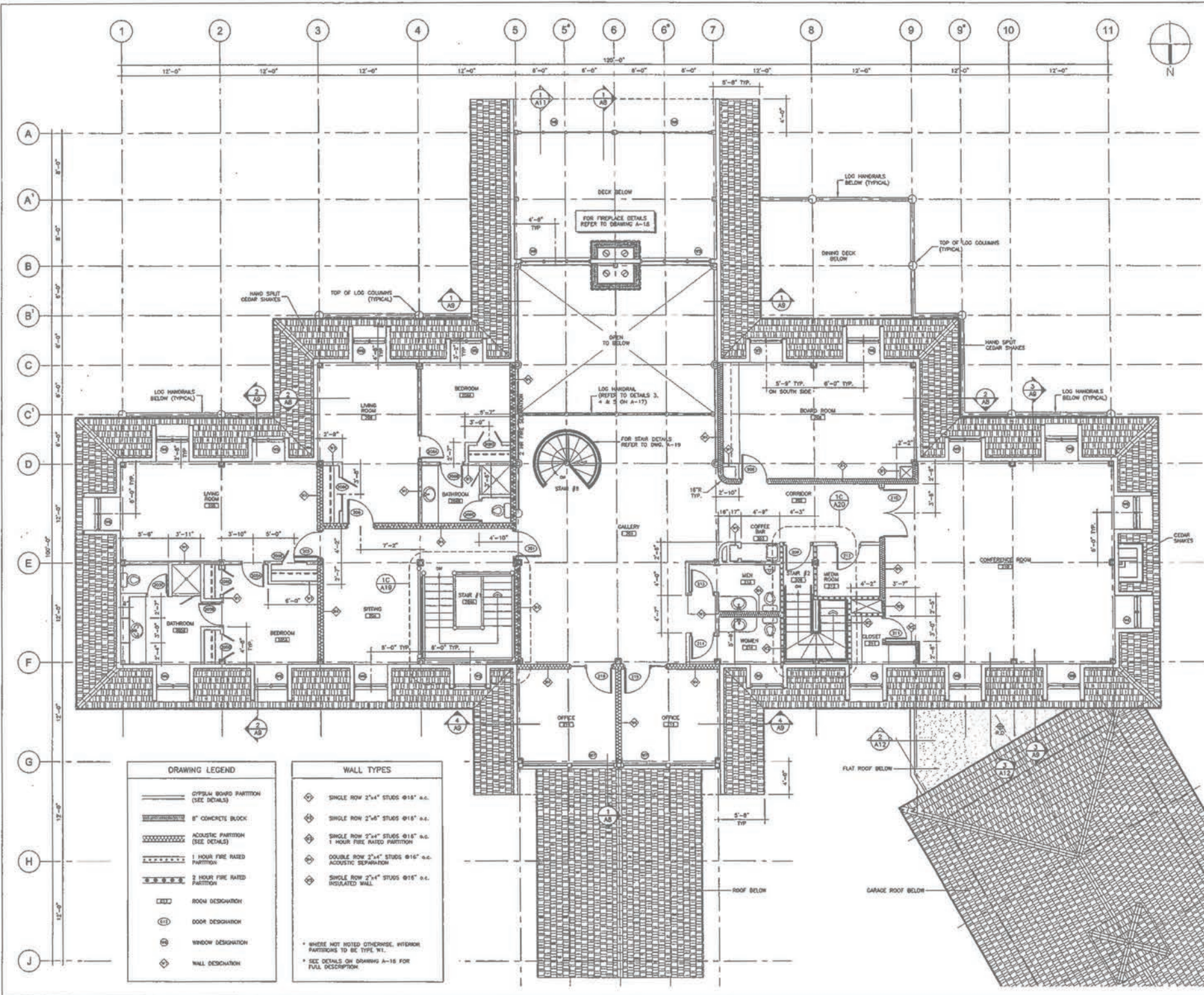
**DRAWING LEGEND**

	GYPHUM BOARD PARTITION (SEE DETAILS)
	8" CONCRETE BLOCK
	ACOUSTIC PARTITION (SEE DETAILS)
	1 HOUR FIRE RATED PARTITION
	2 HOUR FIRE RATED PARTITION
	ROOM DESIGNATION
	DOOR DESIGNATION
	WINDOW DESIGNATION
	WALL DESIGNATION

**WALL TYPES**

	SINGLE ROW 2"x4" STUDS @16" o.c.
	SINGLE ROW 2"x6" STUDS @16" o.c.
	SINGLE ROW 2"x4" STUDS @16" o.c. 1 HOUR FIRE RATED PARTITION
	DOUBLE ROW 2"x4" STUDS @16" o.c. ACOUSTIC SEPARATION
	SINGLE ROW 2"x4" STUDS @16" o.c. INSULATED WALL

\* WHERE NOT NOTED OTHERWISE, INTERIOR PARTITIONS TO BE TYPE W1.  
 \* SEE DETAILS ON DRAWING A-10 FOR FULL DESCRIPTION.



**DRAWING LEGEND**

	GYPSUM BOARD PARTITION (SEE DETAILS)
	8" CONCRETE BLOCK
	ACOUSTIC PARTITION (SEE DETAILS)
	1 HOUR FIRE RATED PARTITION
	2 HOUR FIRE RATED PARTITION
	ROOM DESIGNATION
	DOOR DESIGNATION
	WINDOW DESIGNATION
	WALL DESIGNATION

**WALL TYPES**

	SINGLE ROW 2"x4" STUDS @16" o.c.
	SINGLE ROW 2"x6" STUDS @16" o.c.
	SINGLE ROW 2"x4" STUDS @16" o.c. 1 HOUR FIRE RATED PARTITION
	DOUBLE ROW 2"x4" STUDS @16" o.c. ACOUSTIC SEPARATION
	SINGLE ROW 2"x4" STUDS @16" o.c. INSULATED WALL

\* WHERE NOT NOTED OTHERWISE, WINDOW PARTITIONS TO BE TYPE W1.  
 \* SEE DETAILS ON DRAWING A-18 FOR FULL DESCRIPTION.

This drawing is the property of the Architect. Reproduction is prohibited without the prior written approval. This drawing is not to be used for construction unless it is properly signed and sealed by the Architect. The Contractor must check and verify all given dimensions and report any discrepancies to the Architect prior to construction. This drawing not to be scaled.



D.C. STEWART ARCHITECT LIMITED  
 PERMIT NO. 130  
 ISSUED PURSUANT TO THE ARCHITECTS ACT ALBERTA

Revisions

no.	date	description
1	24-JAN-02	ISSUED FOR CONSTRUCTION

NOTES  
 1. FOR COMPLETE SHIM DIMENSIONS AND DETAILS REFER TO DRAWINGS A-19 AND A-20.

**dc** **stewart** **architect** **limited**  
 Suite 200, 211-17th Avenue SW Calgary Alberta T2S 0A4 Canada (403) 229-4231  
 Architecture Planning Interior Design

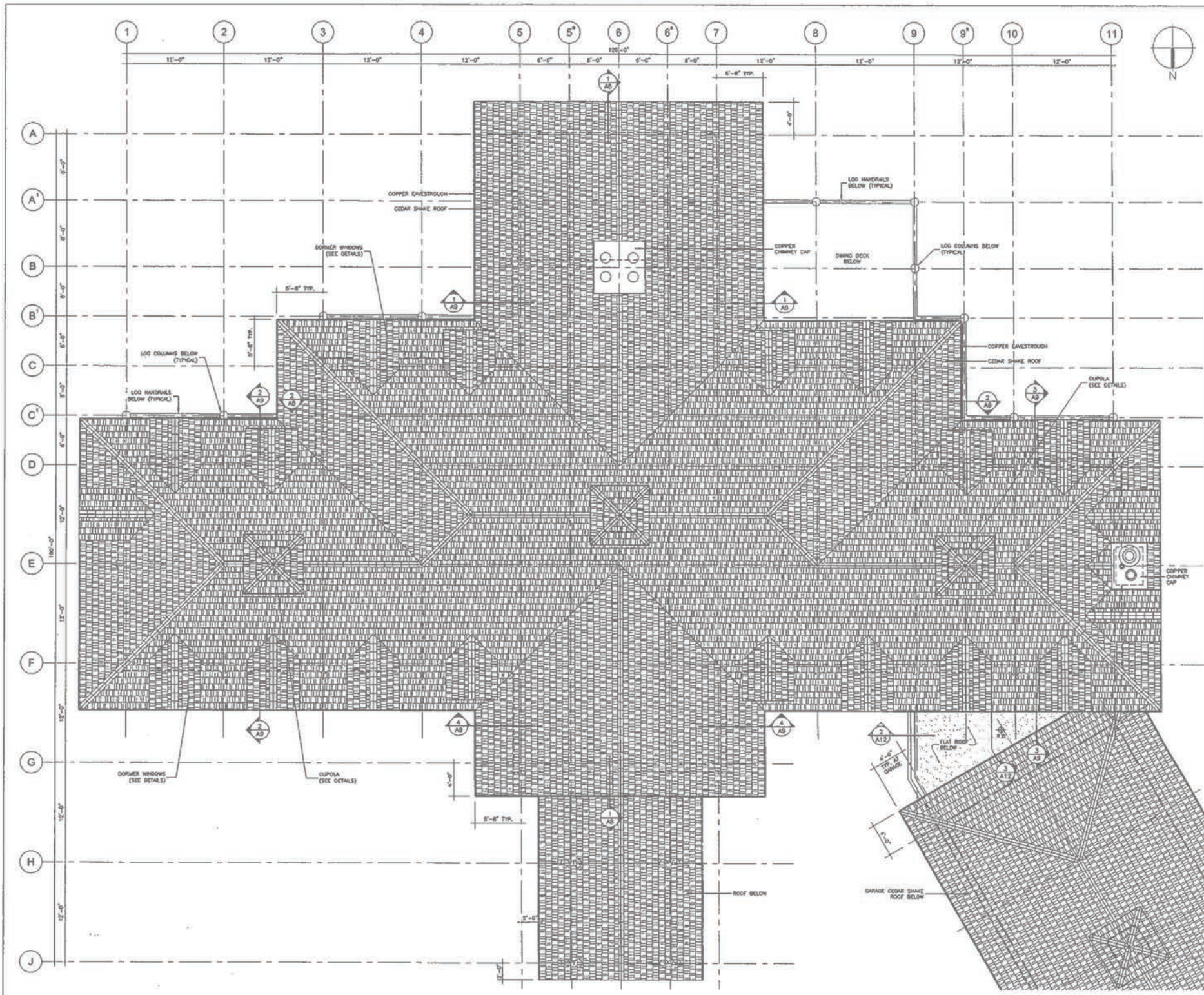
Project  
**PRIVATE GUEST LODGE**  
**GADSBY LAKE**  
**ALBERTA**

drawing title  
**SECOND FLOOR PLAN**

scale 3/16" = 1'-0" project no. 21116  
 date 21-AUG-01 drawing no. A-03  
 drawn EC  
 checked DCS  
 approved DCS







This drawing is the property of the Architect. Reproduction is prohibited without the prior written consent.  
 This drawing is not to be used for construction unless it is properly signed and sealed by the Architect.  
 The Contractor must check and verify all given dimensions and report any discrepancies to the Architect prior to construction.  
 This drawing not to be scaled.



D.C. STEWART ARCHITECT LIMITED  
 PERMIT NO. 120  
 ISSUED PURSUANT TO THE ARCHITECTS ACT ALBERTA

no.	date	description
1	24-JAN-02	ISSUED FOR CONSTRUCTION

NOTE  
 1. REFER TO ELECTRICAL DRAWINGS FOR LIGHTING PROTECTION.

**dcd** **dc**  
 architects **stewart**  
 limited **architect**  
 limited

Suite 200, 211-17th Avenue SW Calgary, Alberta T2S 0A4 Canada (403) 225-4231

Architecture Planning Interior Design

project  
**PRIVATE GUEST LODGE  
 GADSBY LAKE  
 ALBERTA**

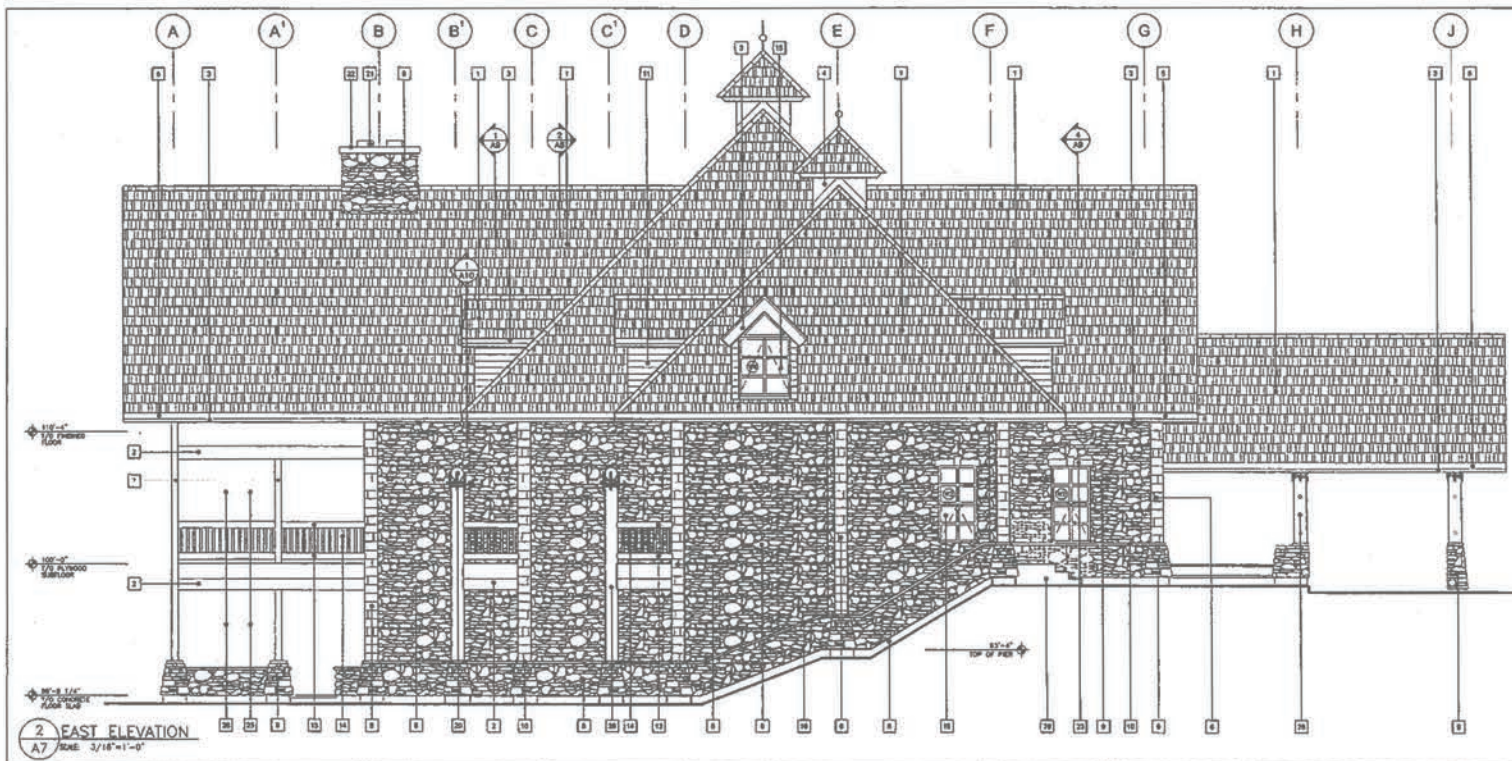
drawing title  
**ROOF PLAN**

scale 3/16" = 1'-0" project no 21116  
 date 29-AUG-01 drawing no A-05  
 drawn EC  
 checked DCS  
 approved





1 SOUTH ELEVATION  
A7 Scale: 3/16"=1'-0"



2 EAST ELEVATION  
A7 Scale: 3/16"=1'-0"

FINISH LEGEND

- 1 1/4" SPIT CEDAR SHAKES
- 2 CLEAR SEAM
- 3 WOOD FASCIA SHAKES
- 4 COPOLY. SFC DETAILS
- 5 COPPER OVERFLOW
- 6 COLOURED STONE PLASTERS (1" WOOD)
- 7 1/4" WSC COLUMN, FINISH
- 8 FINISH (ON ALL EXPOSED CONCRETE)
- 9 COLOURED STONE FINISH
- 10 1" HIGH COLOURED STONE SILL
- 11 1/4" W-GIRT CEDAR SIDING
- 12 STAINED WOOD SHAKES
- 13 8" V LOG HANDRAILS
- 14 2" V WOOD SPINDLES
- 15 PREFINISHED SEALED WOODY SHUT
- 16 PREFINISHED SEALED GLAZED BOOK LIFT
- 17 PREFINISHED INSULATED METAL DOOR
- 18 PREFINISHED INSULATED METAL OVERHEAD DOOR
- 19 WOOD CABING AROUND BOOK
- 20 EXTERIOR LIGHT
- 21 INSULATED SPANLESS STEEL CORNERS
- 22 1/4" UP LUMBER, LIFT
- 23 COLOURED STONE LIGHTS (SEE DETAIL)
- 24 1/4" LOG SHED (SHAKES)
- 25 1/4" POLISHED STEEL HANDRAIL
- 26 CLAD WOOD FRAMES
- 27 PREFINISHED METAL LOUVER
- 28 1 1/2" WSC COLUMN
- 29 CONCRETE STEPS

This drawing is the property of the Architect. Reproduction is prohibited without the prior written approval. This drawing is not to be used for construction unless it is correctly signed and sealed by the Architect. The Contractor must check and verify all given dimensions and report any discrepancies to the Architect prior to construction. This drawing not to be scaled.



D.C. STEWART ARCHITECT LIMITED  
PERMIT NO. 120  
ISSUED PURSUANT TO  
THE ARCHITECTS ACT ALBERTA

revisions	no.	date	description
1	24.AUG.01		ISSUED FOR CONSTRUCTION

FORM

dc  
stewart  
architect  
limited

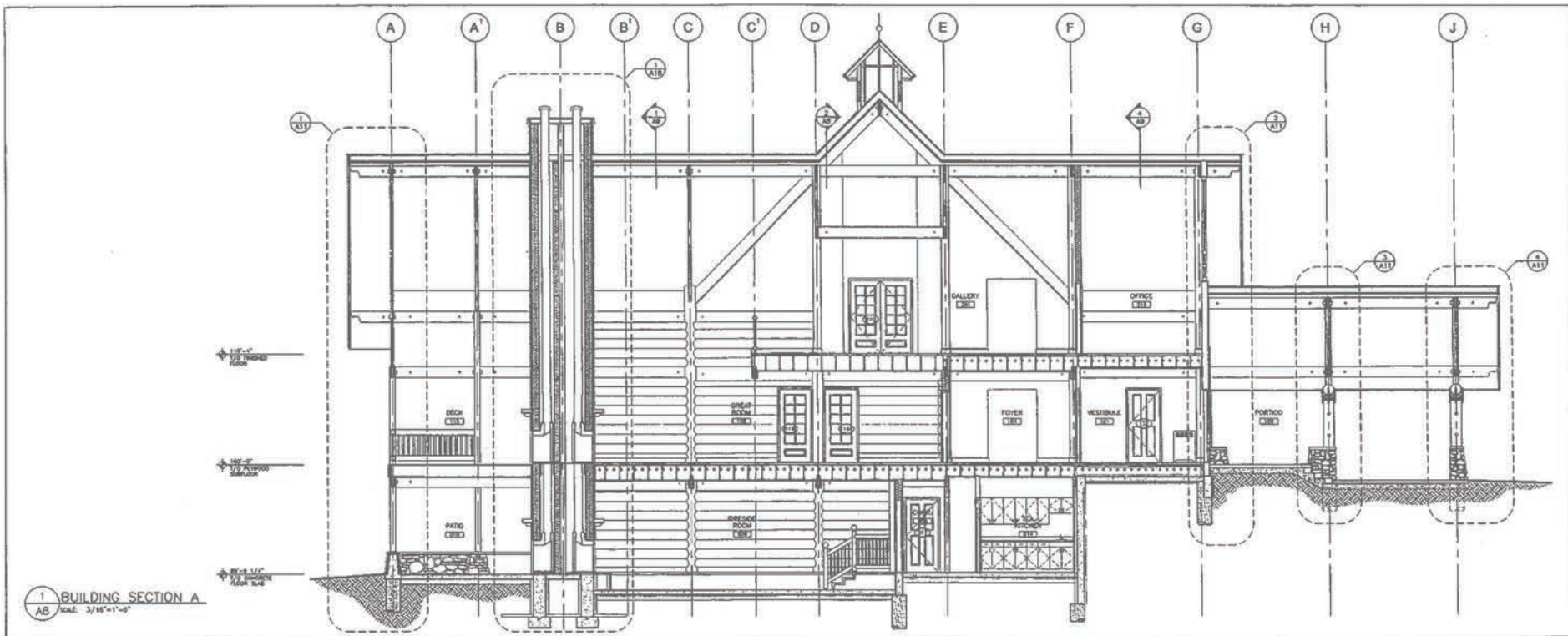
Suite 200, 211-17th Avenue SW Calgary  
Alberta T2S 0A4 Canada (403) 228-4231

Architect Planning Interior Design

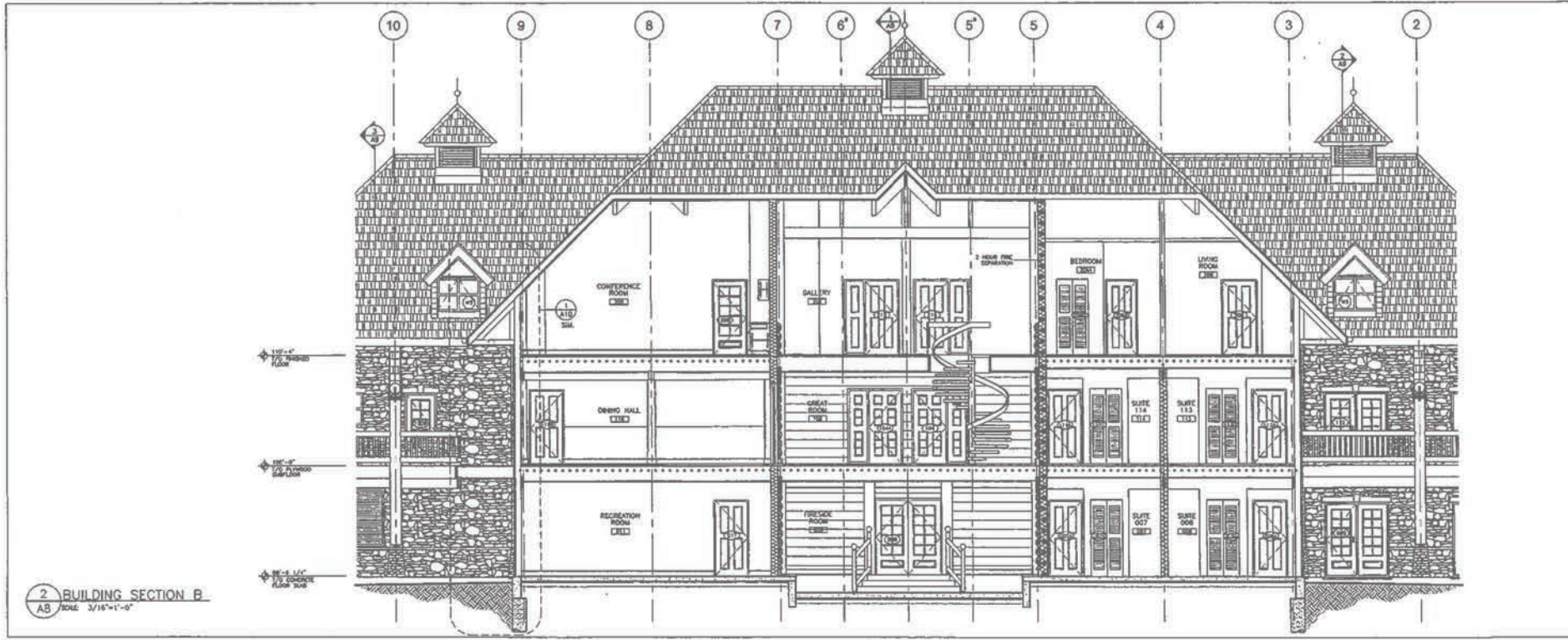
PROJECT  
PRIVATE GUEST LODGE  
GADSBY LAKE  
ALBERTA

drawing title  
SOUTH AND EAST  
ELEVATIONS

scale 3/16" = 1'-0" drawing no. 21116  
date 24.AUG.01 drawing no. A-07  
drawn EC  
checked DCS  
approved



1 BUILDING SECTION A  
SCALE: 3/16"=1'-0"



2 BUILDING SECTION B  
SCALE: 3/16"=1'-0"

This drawing is the property of the Architect. Reproduction is prohibited without the prior written approval. This drawing is not to be used for construction unless it is properly signed and sealed by the Architect. The Contractor must check and verify all given dimensions and room any discrepancies to the architect prior to construction. This drawing not to be scaled.



D.C. STEWART ARCHITECT LIMITED  
PERMIT NO. 120  
ISSUED PURSUANT TO  
THE ARCHITECTS ACT ALBERTA

revision no.	date	description
1	24-JAN-02	ISSUED FOR CONSTRUCTION

NOTES

**dc**  
stewart  
architect  
limited

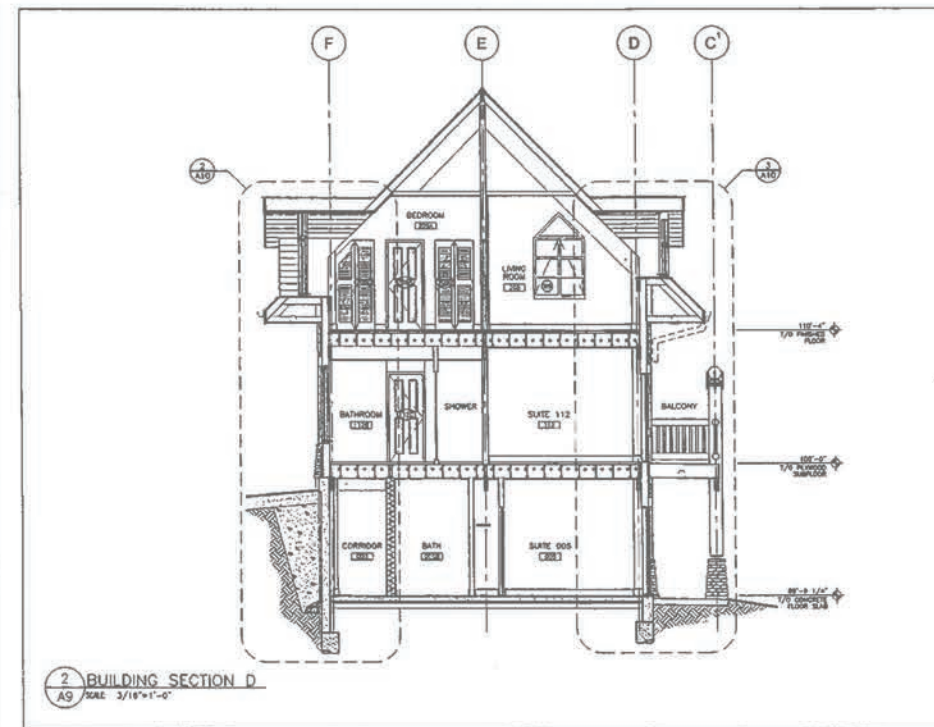
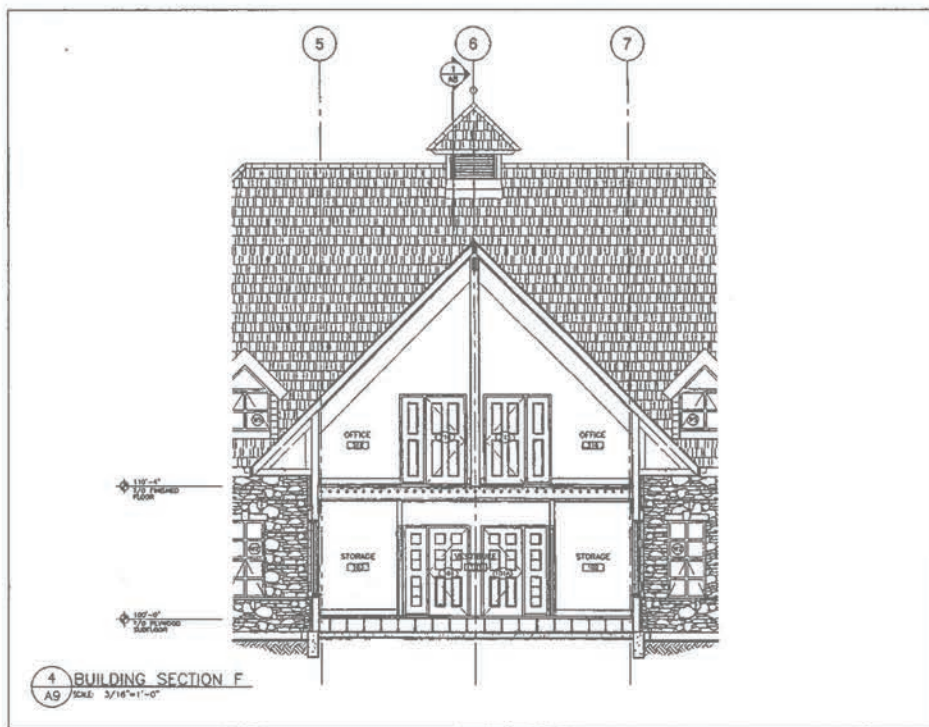
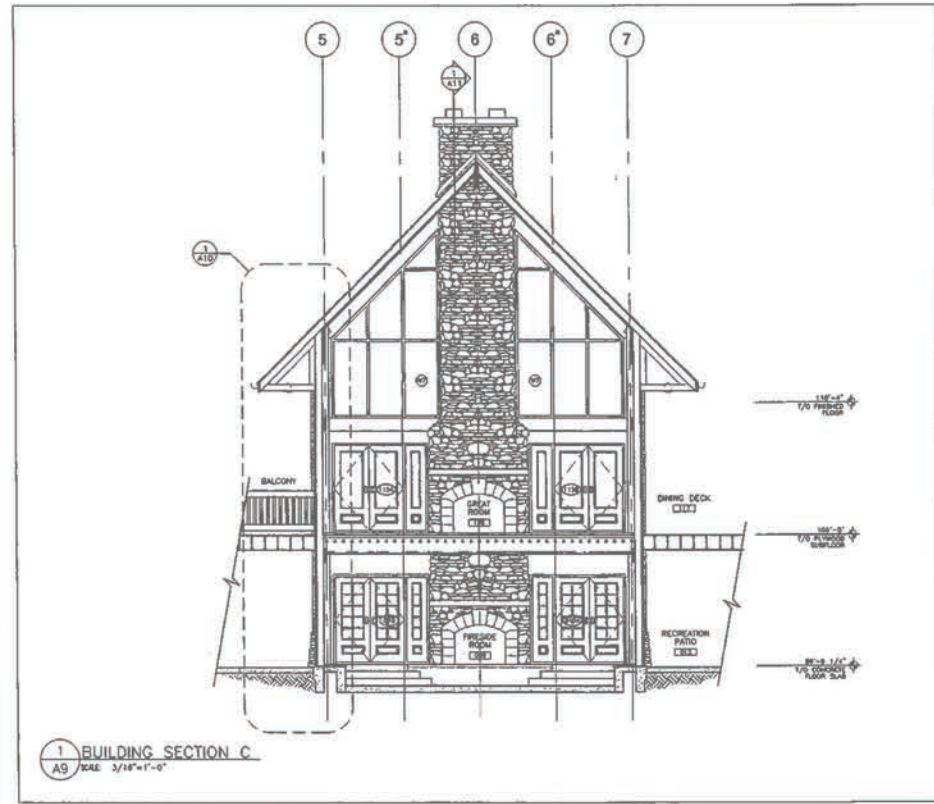
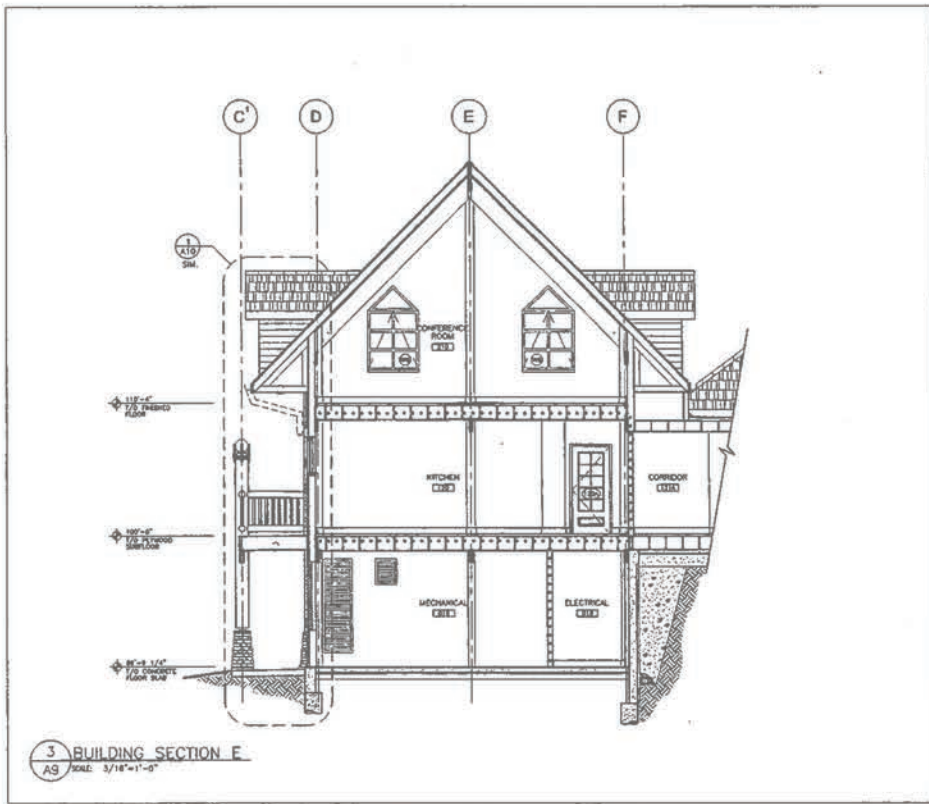
Suite 200, 211-17th Avenue SW Calgary  
Alberta T2S 0A4 Canada (403) 228-4231

Architects Planning Interior Design

project  
**PRIVATE GUEST LODGE  
GADSBY LAKE  
ALBERTA**

drawing title  
**BUILDING SECTIONS**

scale: 3/16" = 1'-0" project no: 21116  
date: 29-AUG-01 drawing no: A-08  
drawn: EC  
checked: DCS  
8/20/01



This drawing is the property of the Architect. Reproduction or alteration without the prior written consent of the Architect is prohibited. This drawing is not to be used for construction unless it is properly signed and sealed by the Architect. The Contractor must check and verify all given dimensions and report any discrepancies to the Architect prior to construction. This drawing not to be scaled.



D.C. STEWART ARCHITECT LIMITED	
PERMIT NO. 120	
ISSUED PURSUANT TO THE ARCHITECTS ACT ALBERTA	
REVISIONS	DESCRIPTION
1	24 JAN. 02
1	ISSUED FOR CONSTRUCTION

NOTES

**dc**  
 stewart  
 architect  
 limited

Suite 200, 211-17th Avenue SW Calgary  
 Alberta T2S 0A4 Canada (403) 226-4231

Architecture Planning Interior Design

project  
**PRIVATE GUEST LODGE  
 GADSBY LAKE  
 AIRPRTA**

drawing title  
**BUILDING SECTIONS**

date	3/16" = 1'-0"	project no	21116
date	29.AUG.01	drawing no	A-09
drawn	EC		
checked	DCS	check title	DL-488 JLC
approved		plot date	